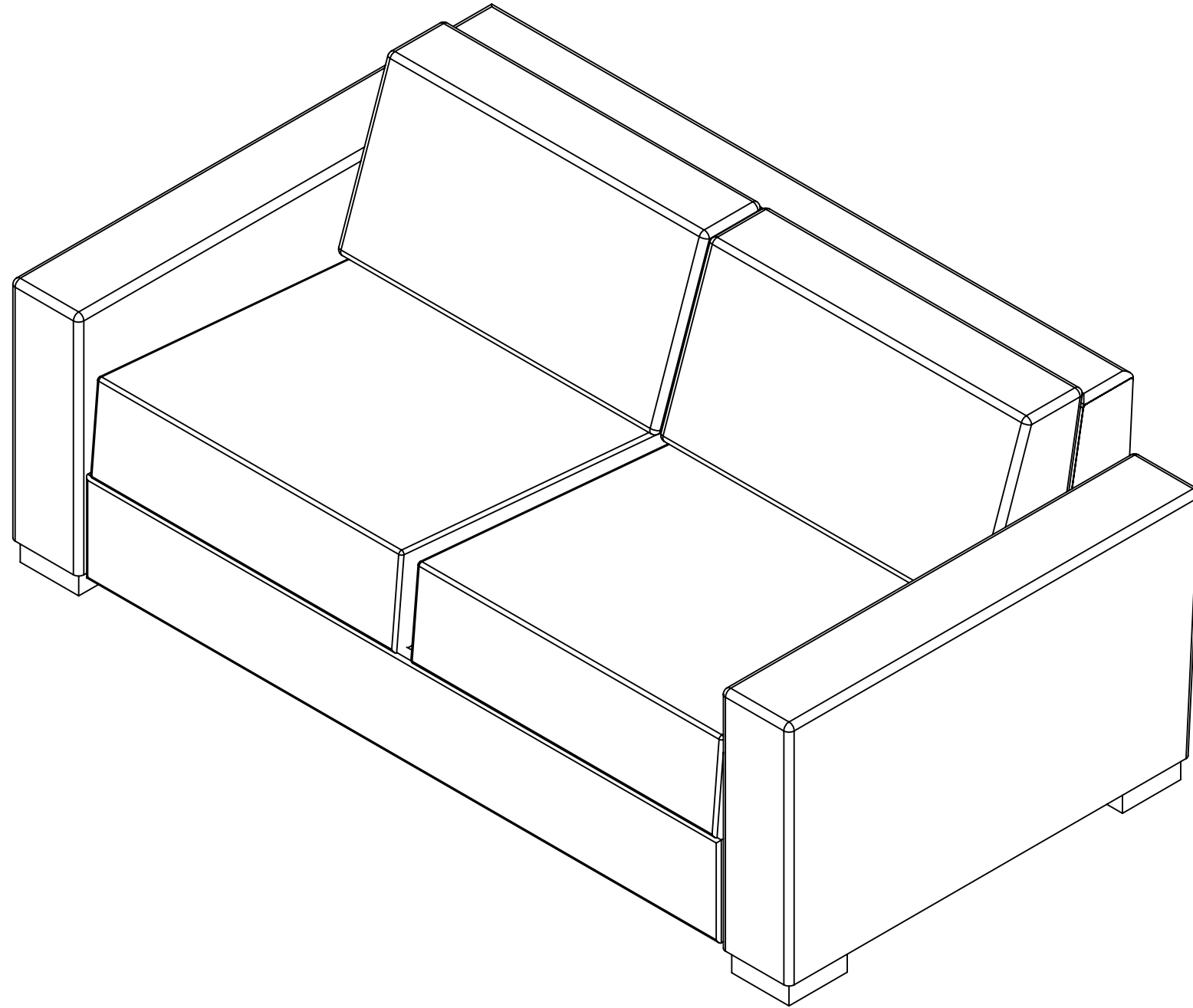


TODAY SLEEPER

DISASSEMBLY INSTRUCTIONS



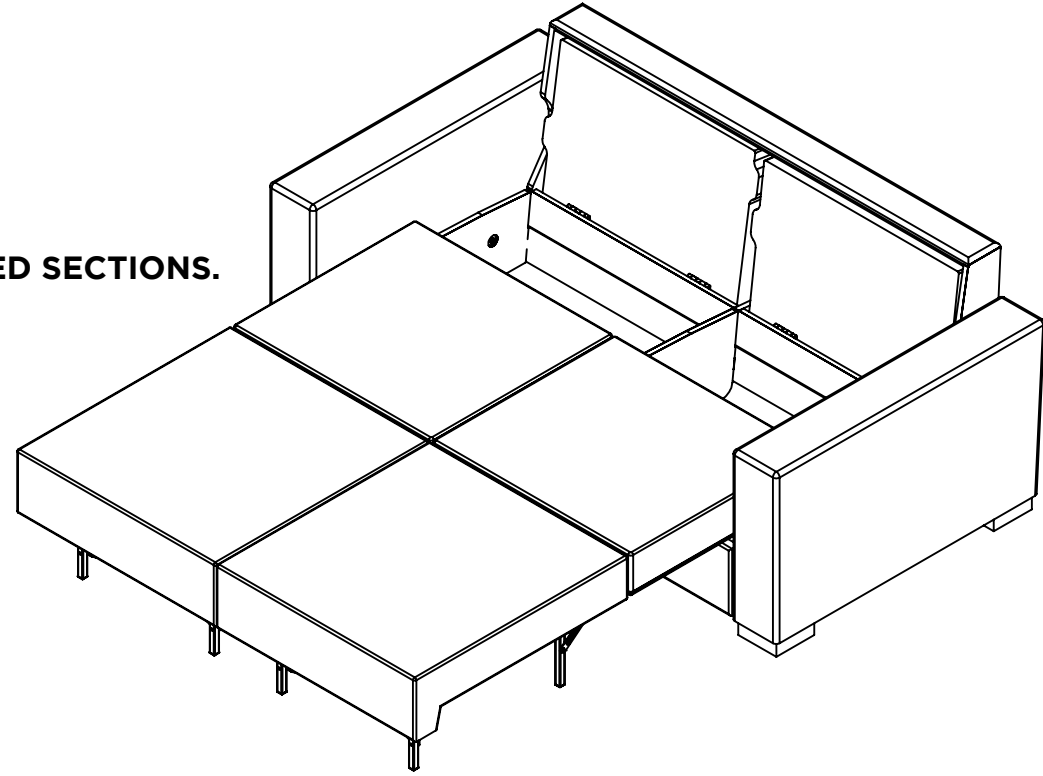
AMERICAN
LEATHER®

STYLE IN MOTION GUIDE:

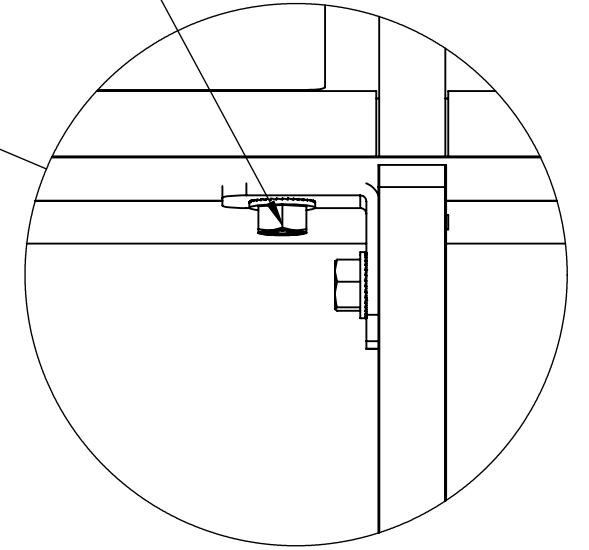
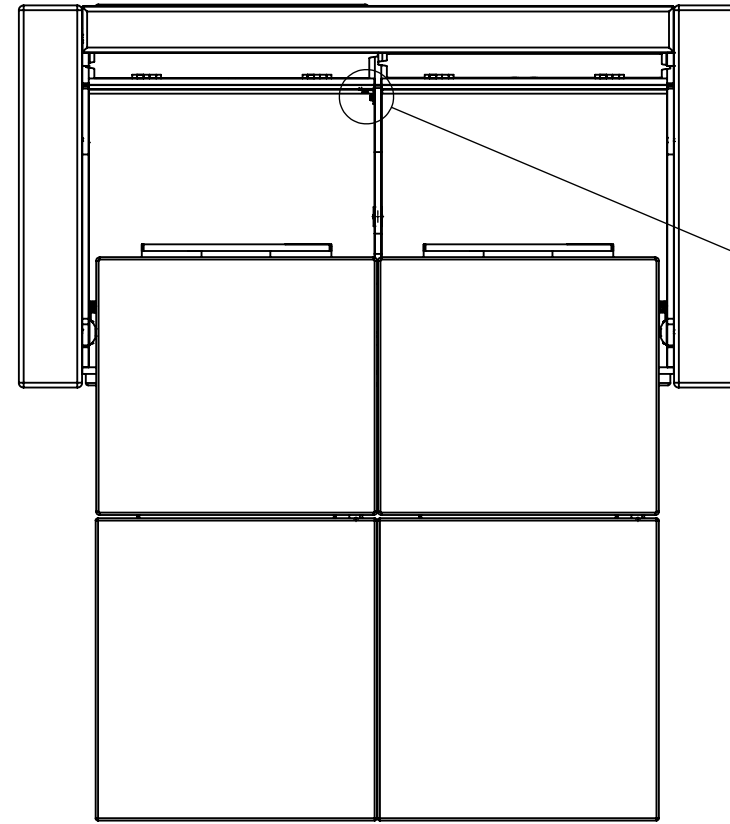
- SHEET 3: HOW TO REMOVE BACK.
- SHEET 4: HOW TO REMOVE ARMS.
- SHEET 5: EXPLODED VIEW.

HOW TO REMOVE BACK SECTION:

STEP 1:
OPEN FRONT BED SECTIONS.



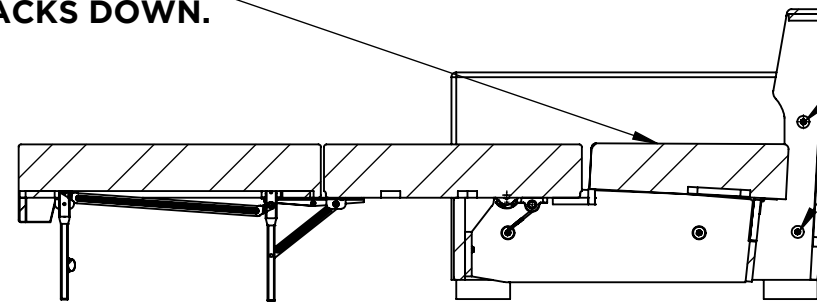
STEP 2:
REMOVE 5/16" BOLT USING A 1/2" DRIVER.



DETAIL A
SCALE 1 : 2

TOP VIEW
LOOKING DOWN

STEP 3:
FOLD BACKS DOWN.

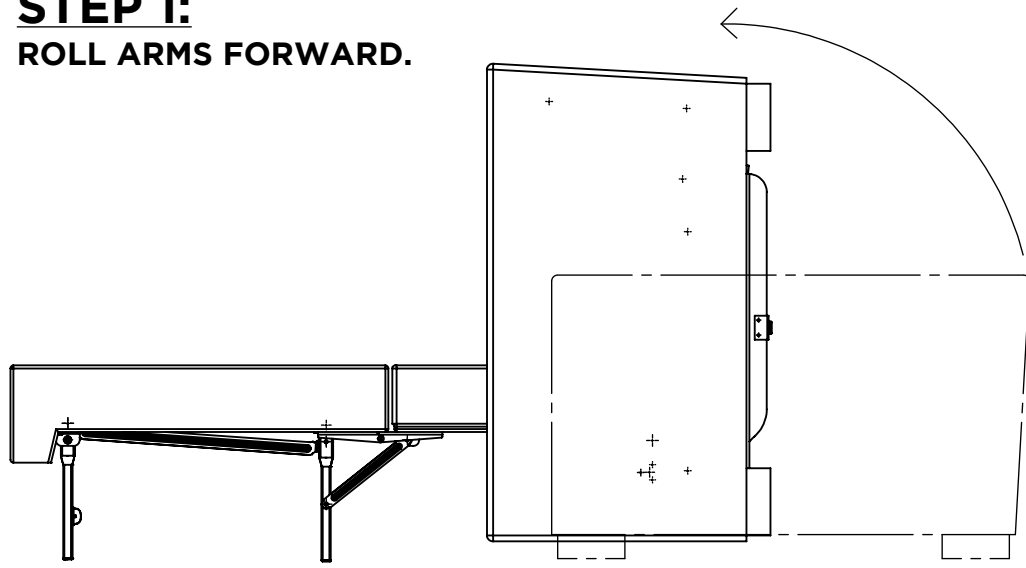


STEP 4:
REMOVE 5/16" BOLTS
USING A 1/2" DRIVER.
BOTH SIDES.

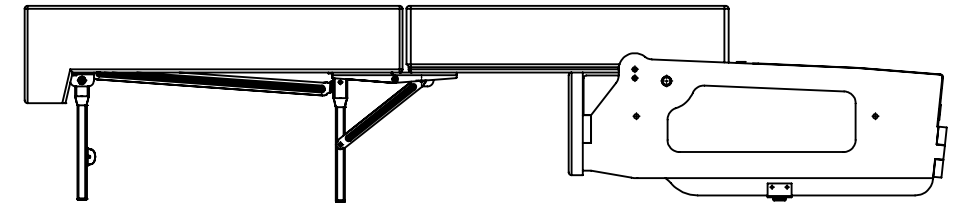
SIDE VIEW

HOW TO REMOVE ARMS:

STEP 1:
ROLL ARMS FORWARD.

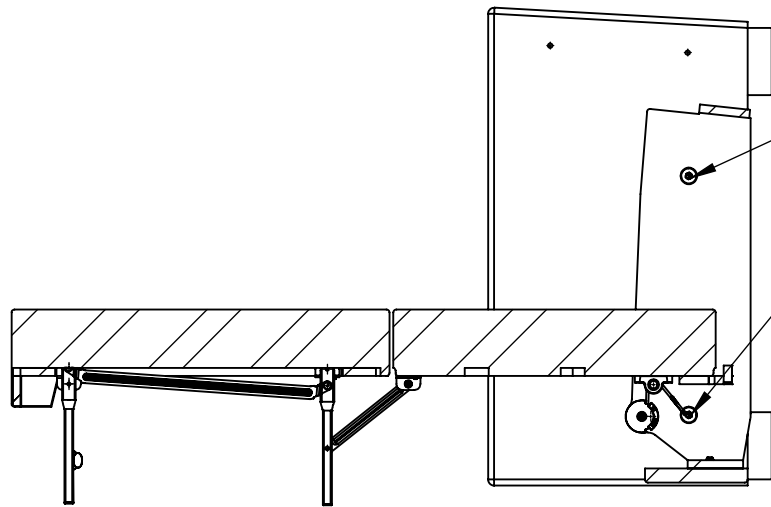


STEP 4:
ROLL BOX DOWN TO FLOOR.

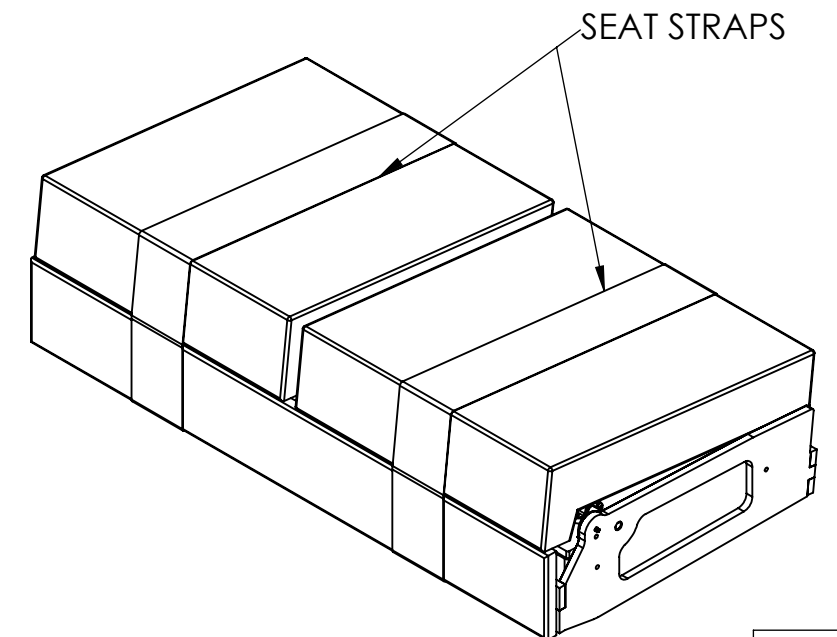


STEP 2:
REMOVE TWO 5/16" BOLTS
USING 1/2" DRIVER.

STEP 3:
REPEAT FOR OPPOSITE SIDE.



STEP 5:
CLOSE BED SECTIONS AND PUT SUPPLIED SEAT STRAPS
ON BEFORE MOVING.



TODAY SLEEPER EXPLODED VIEW:

